



Mobile handheld scanner (Zebra TC51) and Soti
(MobiControl)



Zebra TC51 - Accessories



Leather Holster
works even with
trigger
handle/pistol
grip



Hand Strap



Trigger handle
Black not yellow



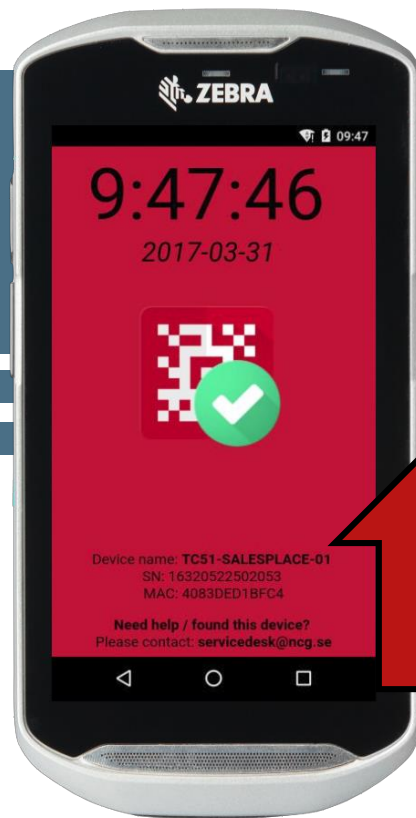
**Battery
charging**
5 slot cradles &
toaster

Mobile handheld scanner (Zebra TC51)



Mobile handheld scanner (Zebra TC51)

Device name and support information

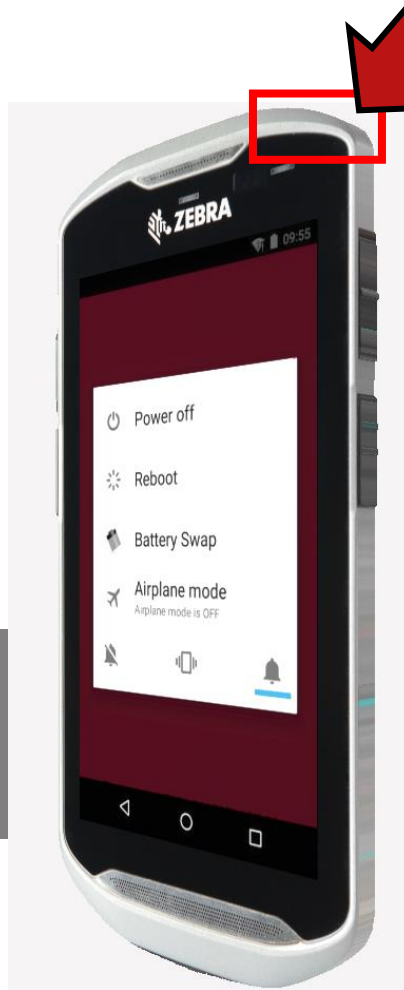


Swipe up from Home screen to access device name and support info

Device name information can also be found under the battery pack

Mobile handheld scanner (Zebra TC51)

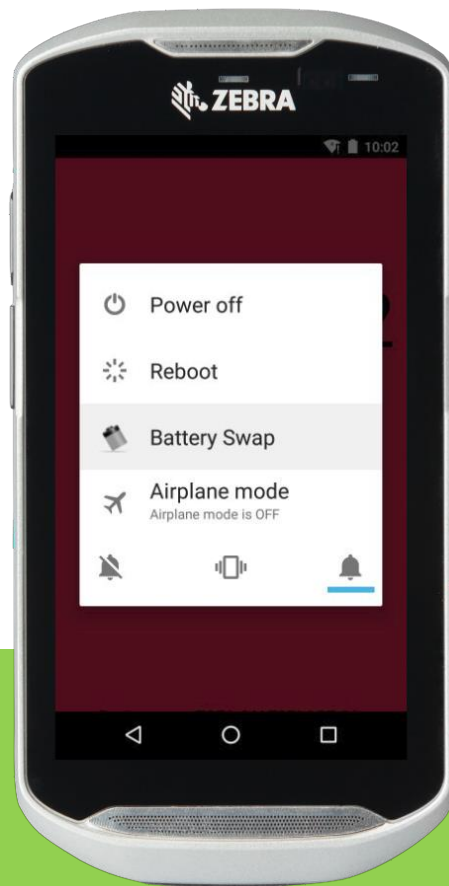
Power Options



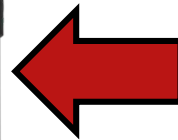
Hold down power button to access power options

Mobile handheld scanner (Zebra TC51)

How to quickly swap battery during operation

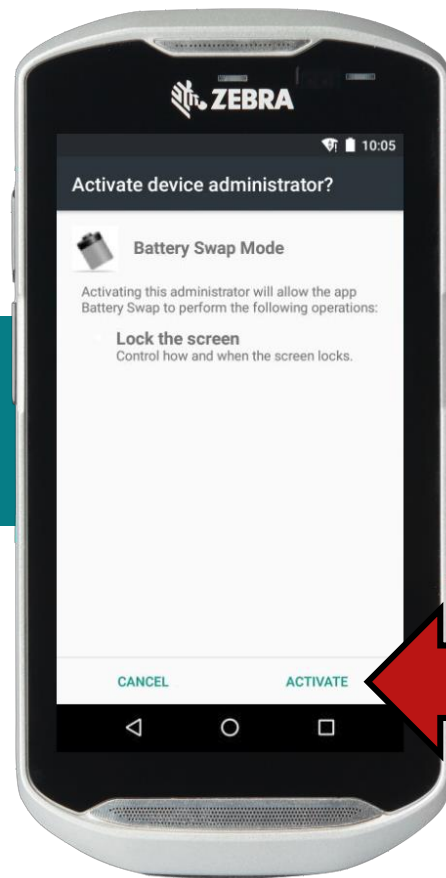


Choose 'Battery Swap' to enable warm swap of battery



Mobile handheld scanner (Zebra TC51)

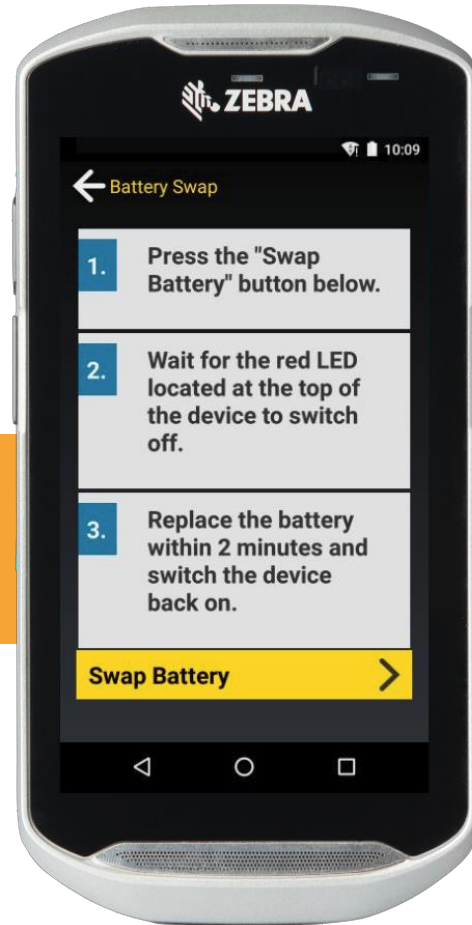
How to quickly swap battery during operation



Press "Activate"

Mobile handheld scanner (Zebra TC51)

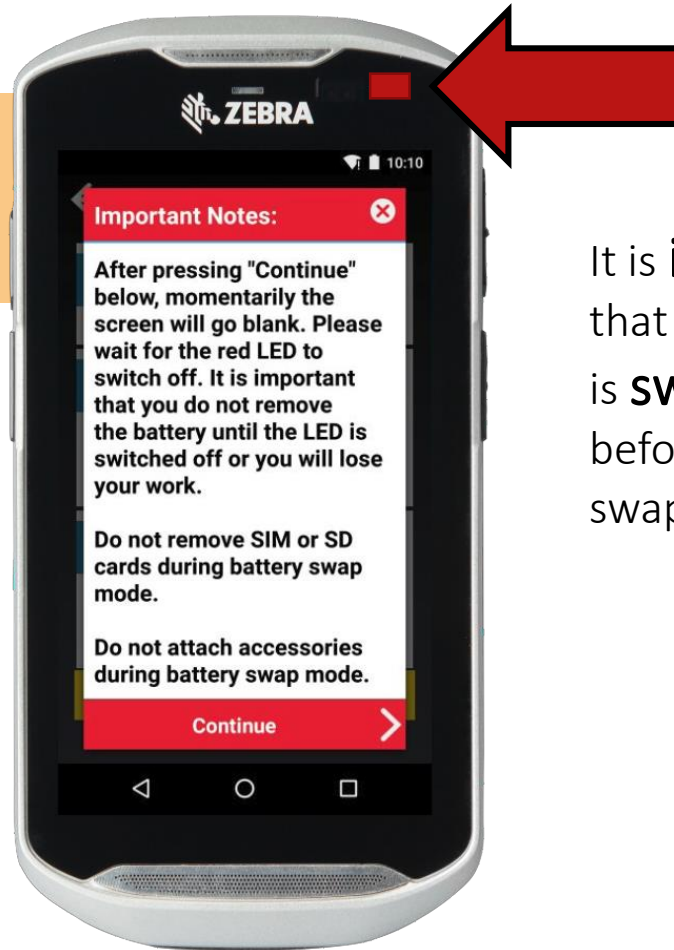
How to quickly swap battery during operation



Follow on-screen instructions

Mobile handheld scanner (Zebra TC51)

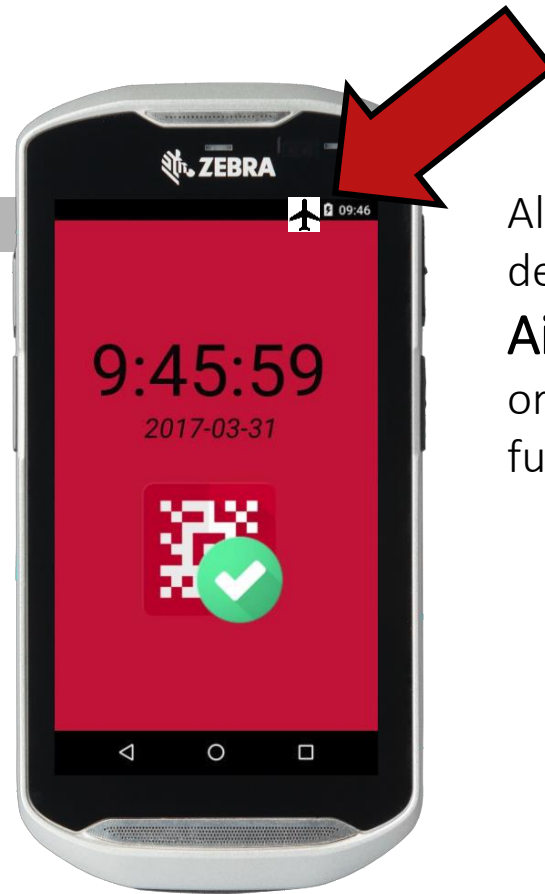
How to quickly swap battery during operation



It is **imperative** that the red LED is **switched off** before battery is swapped

Mobile handheld scanner (Zebra TC51)

Airplane Mode



Always check that device is not in **Airplane Mode** or device will not function

Mobile handheld scanner (Zebra TC51) Airplane Mode



Ask user to press and hold power button then choose **Airplane Mode** again to return to normal wifi-connected operation

Mobile handheld scanner (Zebra TC51)

Wifi-signal

If device doesn't work, check **wifi-signal** strength



Unconnected



Connected (The exclamation mark is in order)

Mobile handheld scanner (Zebra TC51)

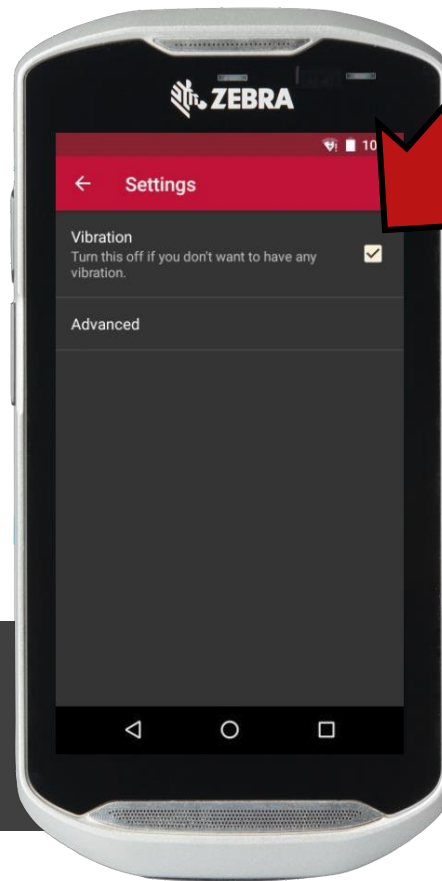
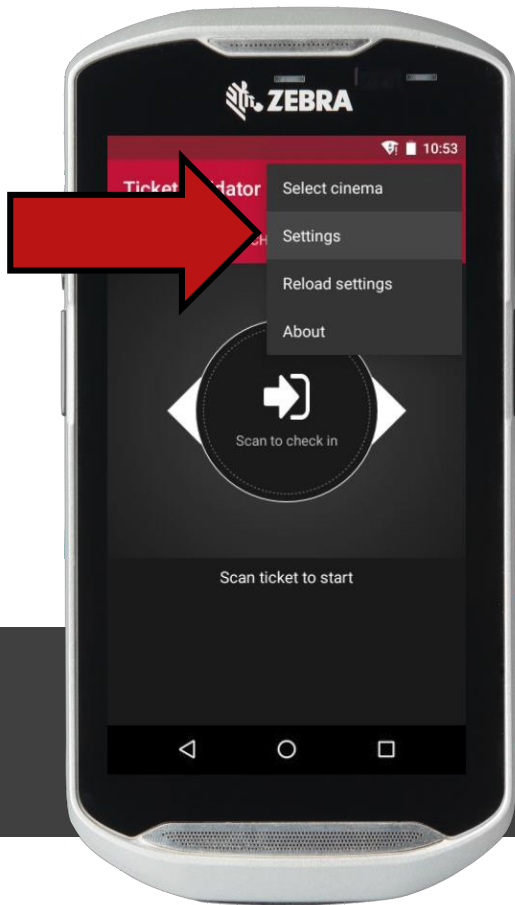
Blipping Sound



If blipping sound is not necessary, setting **volume** at absolute lowest level will render device silent

Mobile handheld scanner (Zebra TC51)

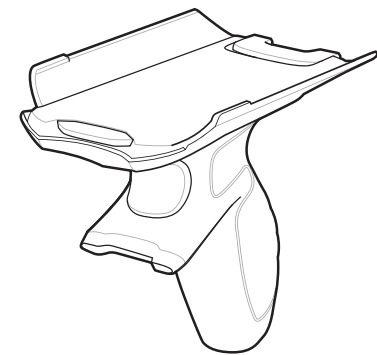
Tactile Feedback / Vibration



Use dropdown menu
at top right corner >
Settings > Uncheck
Vibration box

The '**Advanced**'
option is not available
to end user

TC51/TC56

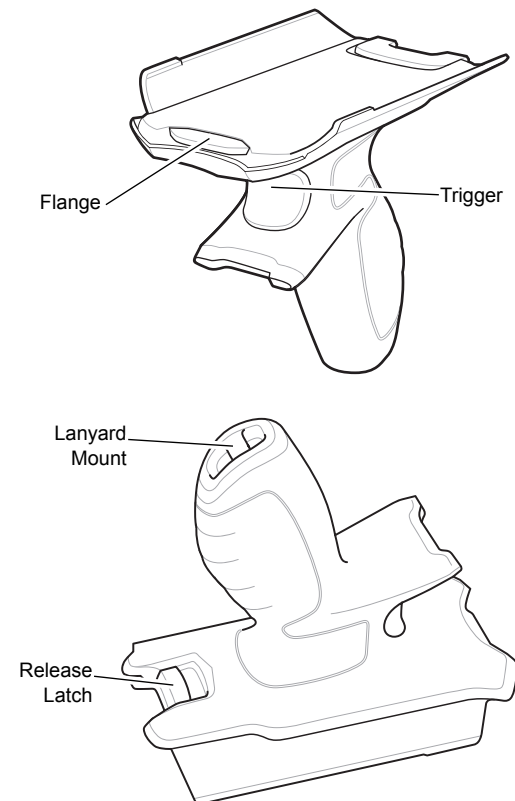


Trigger Handle

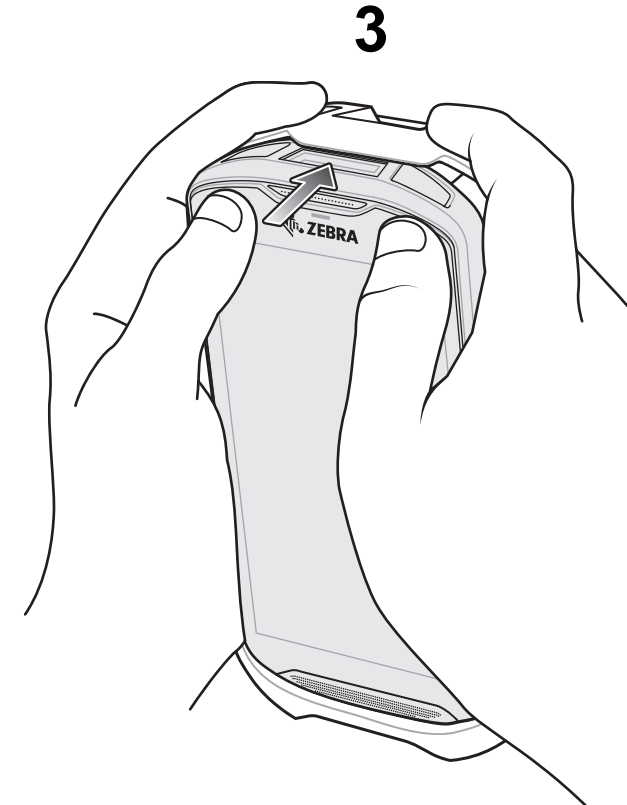
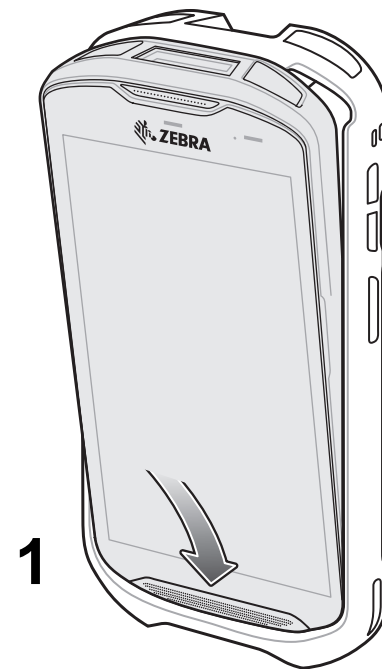
Installation Guide



Features



Rugged Boot Installation



Zebra reserves the right to make changes to any product to improve reliability, function, or design. Zebra does not assume any product liability arising out of, or in connection with, the application or use of any product, circuit, or application described herein. No license is granted, either expressly or by implication, estoppel, or otherwise under any patent right or patent, covering or relating to any combination, system, apparatus, machine, material, method, or process in which the products might be used. An implied license exists only for equipment, circuits, and subsystems contained in Zebra products.



Zebra Technologies Corporation
3 Overlook Point
Lincolnshire, IL, U.S.A.

Zebra and the stylized Zebra head are trademarks of ZIH Corp., registered in many jurisdictions worldwide. All other trademarks are the property of their respective owners.

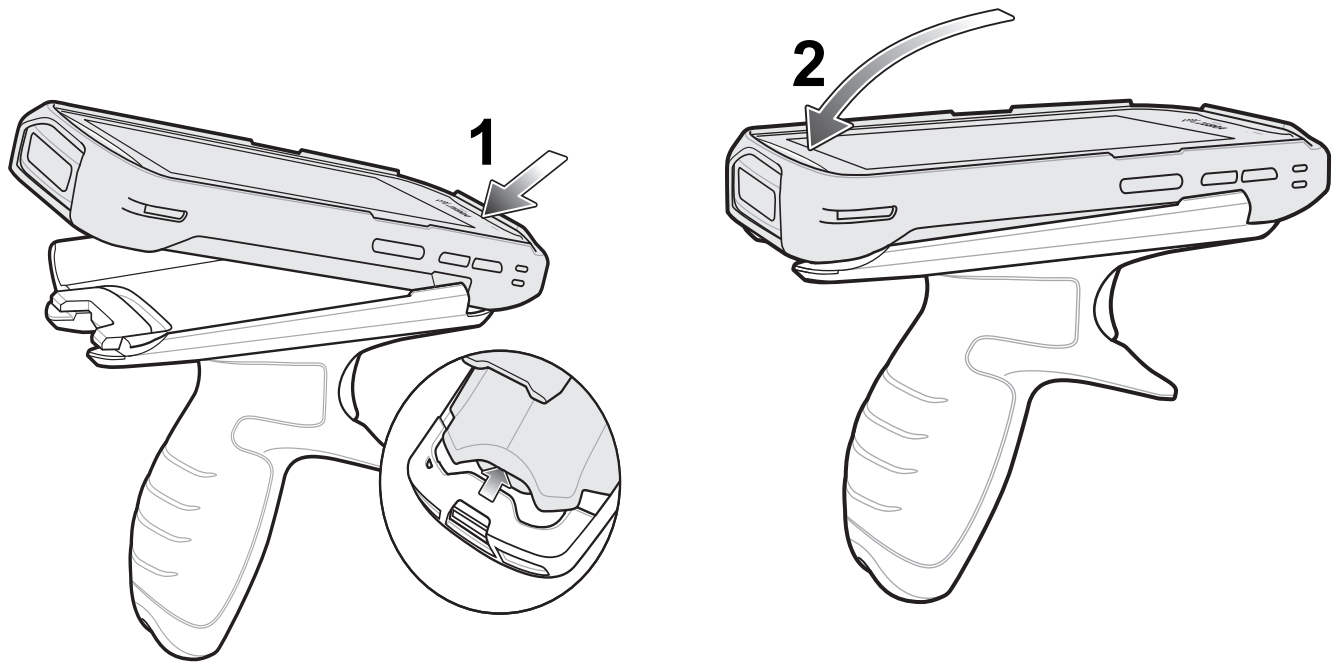
© 2016 Symbol Technologies LLC, a subsidiary of Zebra Technologies Corporation. All rights reserved.



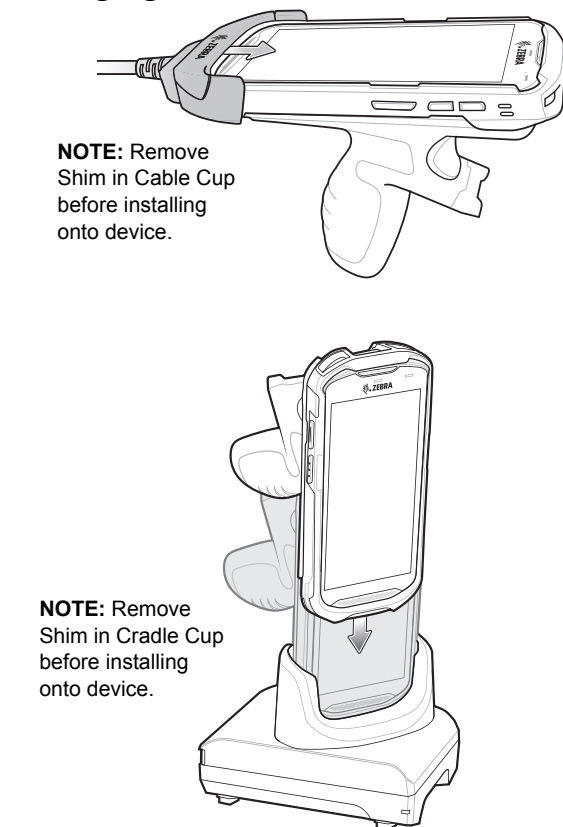
MN-002906-01 Revision A — September 2016



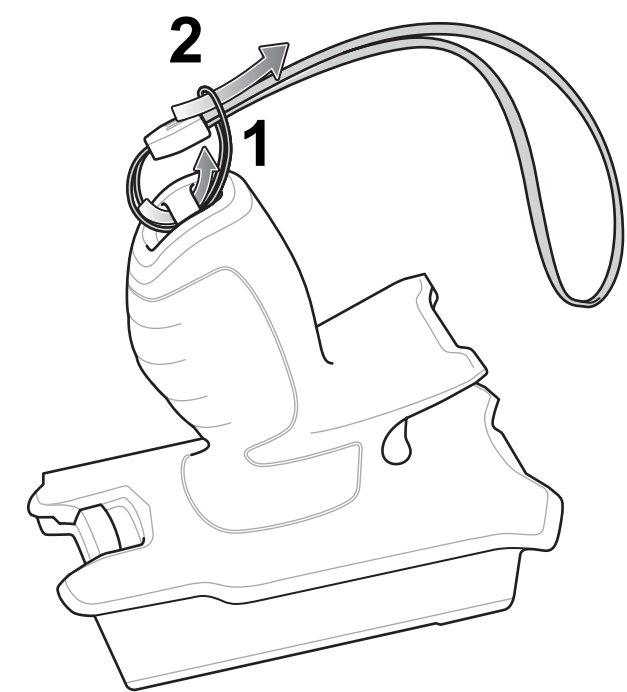
Device Installation



Charging



Optional Lanyard Installation



Removal

